

Typical installation DC energy recovery watermaker Eco-Systems Integral 30

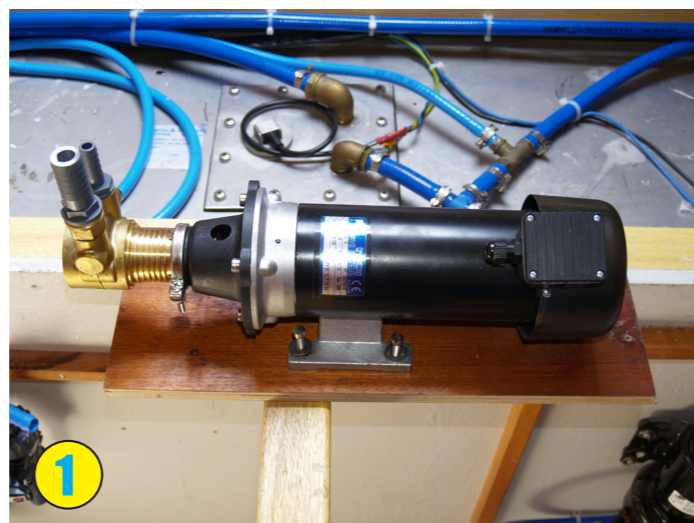
For this installation, on an Arcona 44, it was decided to position the unit in the bow cabin. The feed pump and filters were situated under the bunk, with the main pressure intensifier & membrane unit fitted under the small adjoining sofa. The instrument panel was fitted to the sofa kickboard.

Before installation, through hull fittings with seacock were installed for the sea water intake and brine discharge, hoses connected and run to the installation area. A connection was tapped into the boats fresh water supply and a hose run to the installation area for the freshwater flush facility. Electrical power was taken from the main DC switch panel via a circuit breaker, and 2 core cable run to the feed pump area.

All images copyright Sailfish Marine 2012.



1. Installation is in the bow cabin. The small sofa has been taken apart to aid fitting. hoses have been positioned ready for the pressure intensifier & membrane



1. Feed pump mounted onto a plate of marine ply for easy installation and service removal at a later date.

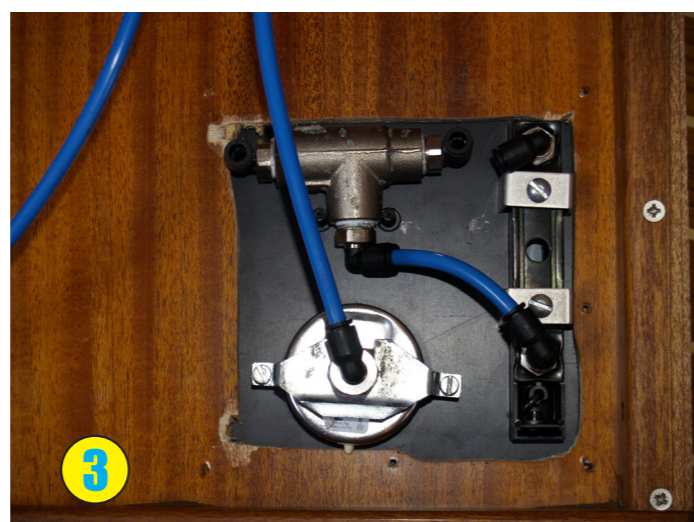


2. Filter assembly offered to the bulkhead to find the best position for easy filter change and service.



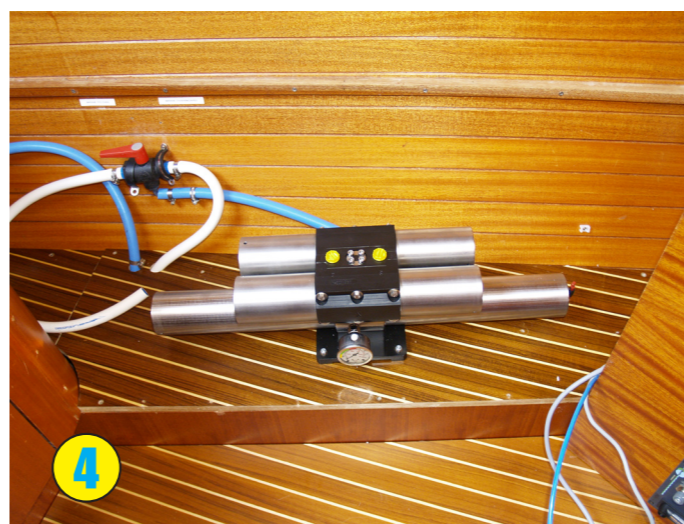
3. Filter assembly mounted on bulkhead, feed pump mounted below. All relevant hoses connected. Power supply connected.

Filter assembly & Pump



2. Area inside sofa ready to accept main pressure/membrane unit, instrument panel can be seen mounted in sofa kickplate.

3. Small hoses connected to the rear of the instrument panel for feed pressure gauge and product flow meter. Product water feed pipe run to main tank.



4. Pressure intensifier & membrane assembly bolted into position inside sofa.

5. hoses connected for seawater feed into unit and brine discharge out.



6. Sofa kickplate re-positioned and screwed back into place, sofa re-assembled.

7. Installation complete!
This installation took one engineer approx 6 hours.